



THE BOARD AND BATTEN

Newsletter of the Pacific Grove Heritage Society

April / May 1994

The Inside Stories

☞ T. A. Work

First National Bank
Founder

☞ Others Saw Us Through Postcards

Light House Avenue
circa 1941

☞ Down The Piney Path

Springfield Gas
Machine Installed

Musical Workmen on
El Carmelo

Skating Rink
Completed

☞ 1994 Heritage Awards

Recipients
Announced



1930 photo

Tom A. Work

25th Annual Victorian Home Tour
Sunday October 9, 1994

T. A. Work's Block

W. H. Weeks, the Watsonville architect, was over on Tuesday and while here T. A. Work made arrangements with him for drawing the plans for his new concrete block building on the corner of Light House and Grand avenues. The new structure is to be two stories in height and it will be divided into five stores, three of which will be provided with a basement. On Grand avenue there will be two stores, as the ground slopes sufficiently to have two entrances on that thoroughfare running back under the back part of the three stores which front on Lighthouse avenue. The upper floor will eventually be finished off into offices, with large plate glass windows which will fill nearly all the space along both the front and side of the building.

(From the Pacific Grove Review, February 9, 1906)

The City Trustees

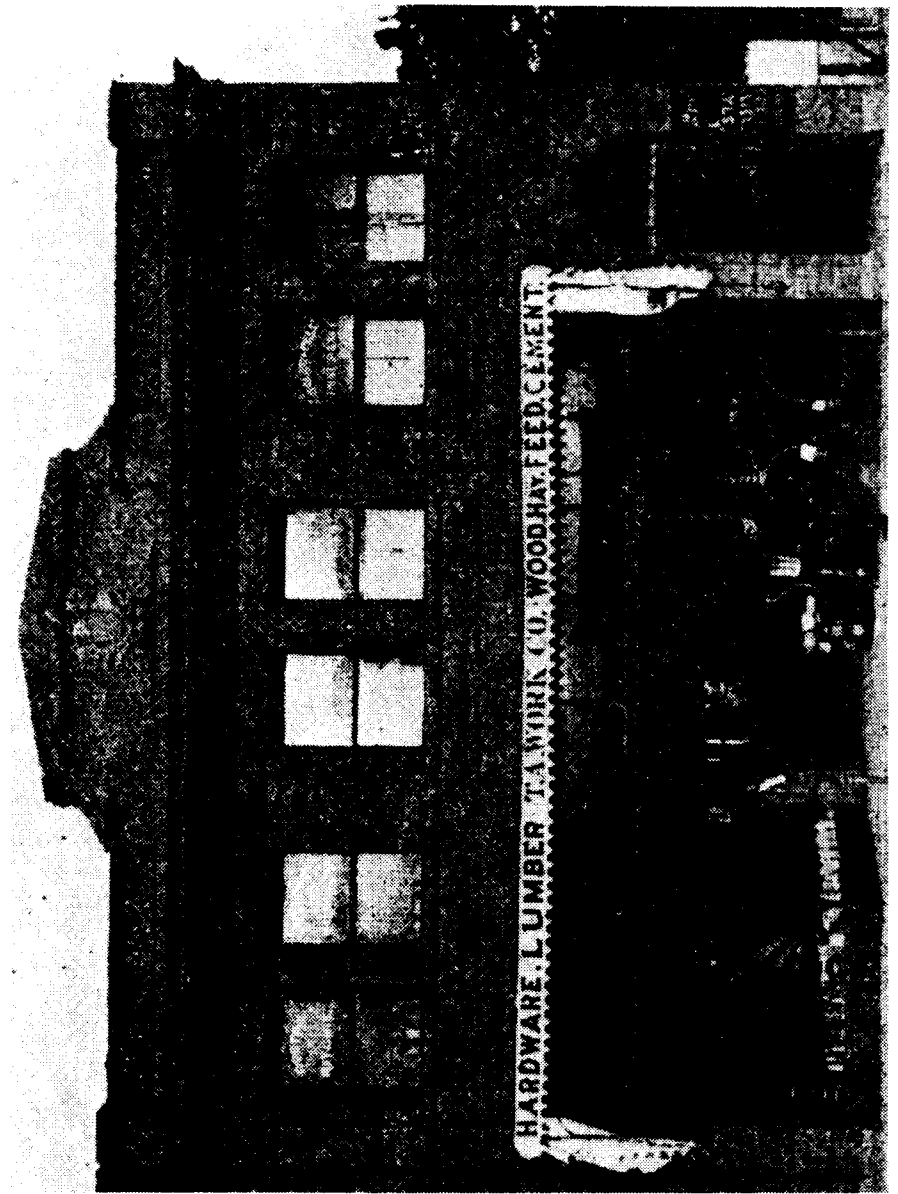
The regular meeting of the city Trustees was held in the city hall on Monday evening, with all members present except Trustee Lewis.

Mrs. McGeorge requested and was granted a rebate of license tax for a period of ten months. G. A. Hovey presented a petition to the Board requesting the privilege, as an old soldier, of canvassing without paying the usual license fee. Referred to the finance committee. The following protest was received against permitting the moving of the Grove Steam Laundry to the lots on the corner of Light House avenue and Twelfth street: February 2, 1906. To the Honorable Board of City Trustees of the city of Pacific Grove. Gentlemen: We, the undersigned, residents and property owners in, about and near the proposed site for a laundry to be established on the northwest corner of 12th and Light House, do by these presents hereby protest against the establishment of a laundry in said part of the city for the following reasons, to-wit: 1. Will impair the health of the residents; 2. Will depreciate the value of property; 3. Will raise the fire insurance; 4. Will disturb the peace and quiet of our home life. Respectfully submitted, Mr. Baker.

An ordinance was introduced and read for the first time defining the limits within which wooden buildings may not in the future be erected. The limits as defined in the ordinance are as follows: Beginning at the corner of Fountain and Laurel and extending westerly to 17th street, down 17th to Union, along Union to Fountain and from Fountain to Laurel.

A resolution was passed providing for the payment of interest on all claims against the city which become due in the future and for the payment of which there are no funds in the treasury.

2



T. A. Work Co. building at corner of Grand & Lighthouse in 1906.

1906 photo

3

Shell and Curio Shops Before 1900

❖ by E. C. Davis

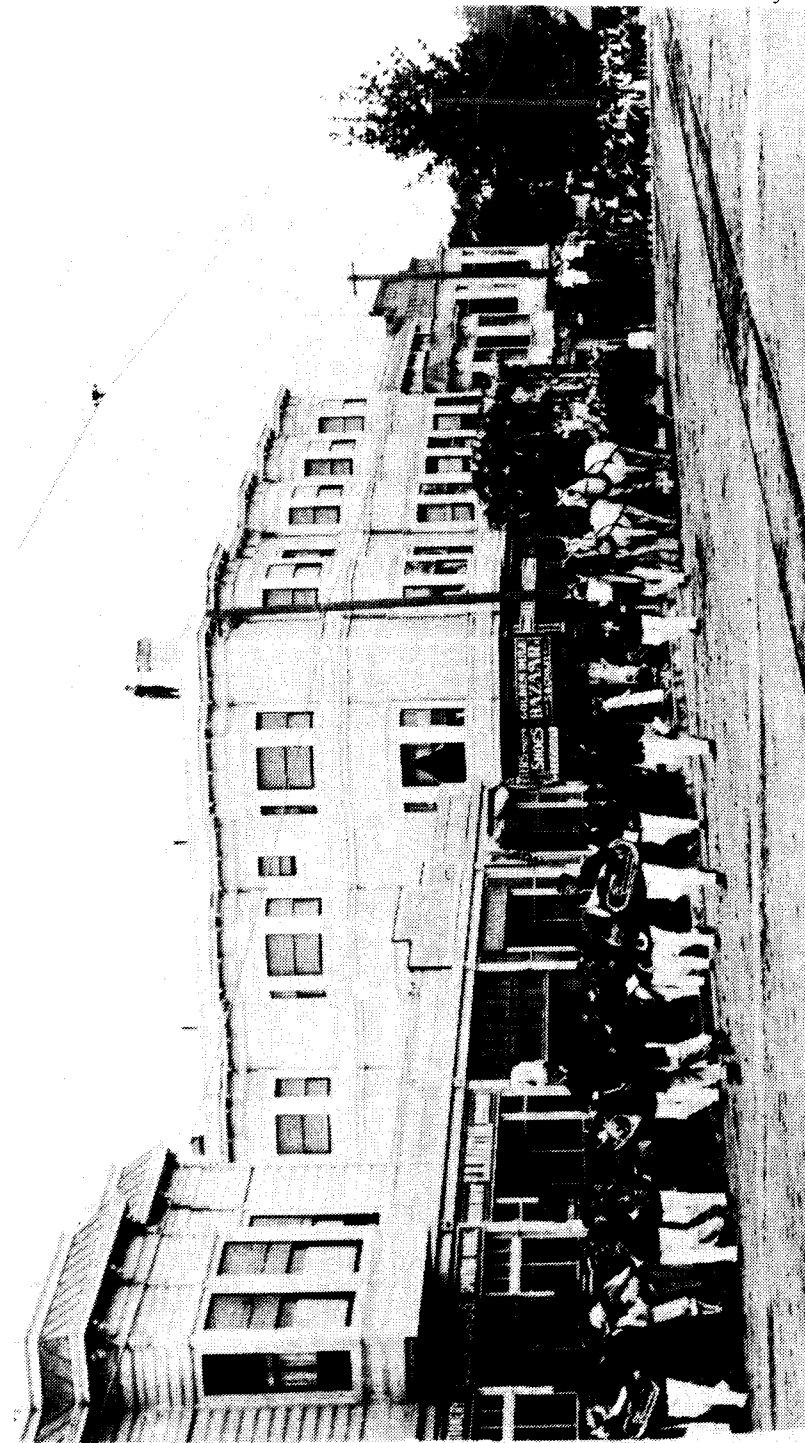
Visitors to the Monterey Peninsula in the 1900's found several curio shops to explore. The best known of these was that of J. K. Oliver in Monterey, but previous to this there was Boughton's Star Shell Store, opposite the old Del Monte Bath House, and A. N. Clarke's Shell and Curio Bazaar near the beach at Lover's Point in Pacific Grove. This closed in 1895. There was also Varien's Shell Store on Light House Road near Grand Avenue in Pacific Grove, and W. C. Smith's Shell store in New Monterey, which moved to Pacific Grove in 1901. In 1893, Mrs. B. C. Winston opened a Sea Moss Emporium near Varien's store, where she had a stock of 2,000 specimens of sea weed, all collected by herself. Fanciful and elaborate pressed sea weeds were a popular hobby, floated onto special paper stock and kept in albums. These were traded from coast to coast. At Laurel and Park in Pacific Grove there was another sea moss shop, collected by Mrs. King. A leader in the sea moss hobby was Mary M. B. Norton, who was later to organize the present Pacific Grove Museum. She was a retired college instructor with a great interest in marine biology.

Mrs. B. C. Winston moved her shop from Pacific Grove to a place near the Del Monte Bath House because there was too much competition in Pacific Grove. In her new location there were stuffed marine animals and fish. A large part of this exhibit was sold to a San Diego curio dealer in 1894.

In addition to curio shops, tourists could buy abalone shells and other seashore souvenirs at stands along the roadside, kept by Chinese children. Abalone shells were valued and shipped all over the world. Some residents traded them for cherries in Hollister where groups went each summer to pick fruit.



Charlie Culp of Culp Brothers Stationary standing outside his shop on Light House Road. Visible across the street is Winston's Curio shop and The Popular Dry Goods Store, owned by R. L. Holman, before the business was moved and renamed Holman's.



Notice the Culp Brothers Stationary and Sporting Goods store on Lighthouse in this photo of an early parade. Main building in the center of photo is the Del Mar Hotel, which was demolished in October 1953 to make way for the present Bank of America.

Tom Work and The First National Bank of Pacific Grove

(Both of these articles are from the Jan. 10, 1930 issue of the Grove At High Tide.)

Bank Introduces New Architecture

With the new First National building has come something new in the type of Pacific Grove architecture. This is the community's first major building which has zealously followed the old Spanish tradition. In building the new structure, T. A. Work (bank founder, president and chairman of the board) was avowedly influenced by the new Kocher and Merrill buildings in Carmel, which are models of beauty and utility. While this type of building has long been advocated for Monterey, it has been but recently that Carmel has attempted it and the new bank building is the first such edifice in Pacific Grove. There have been a number of fine Spanish type residences in this community, but no business structures.

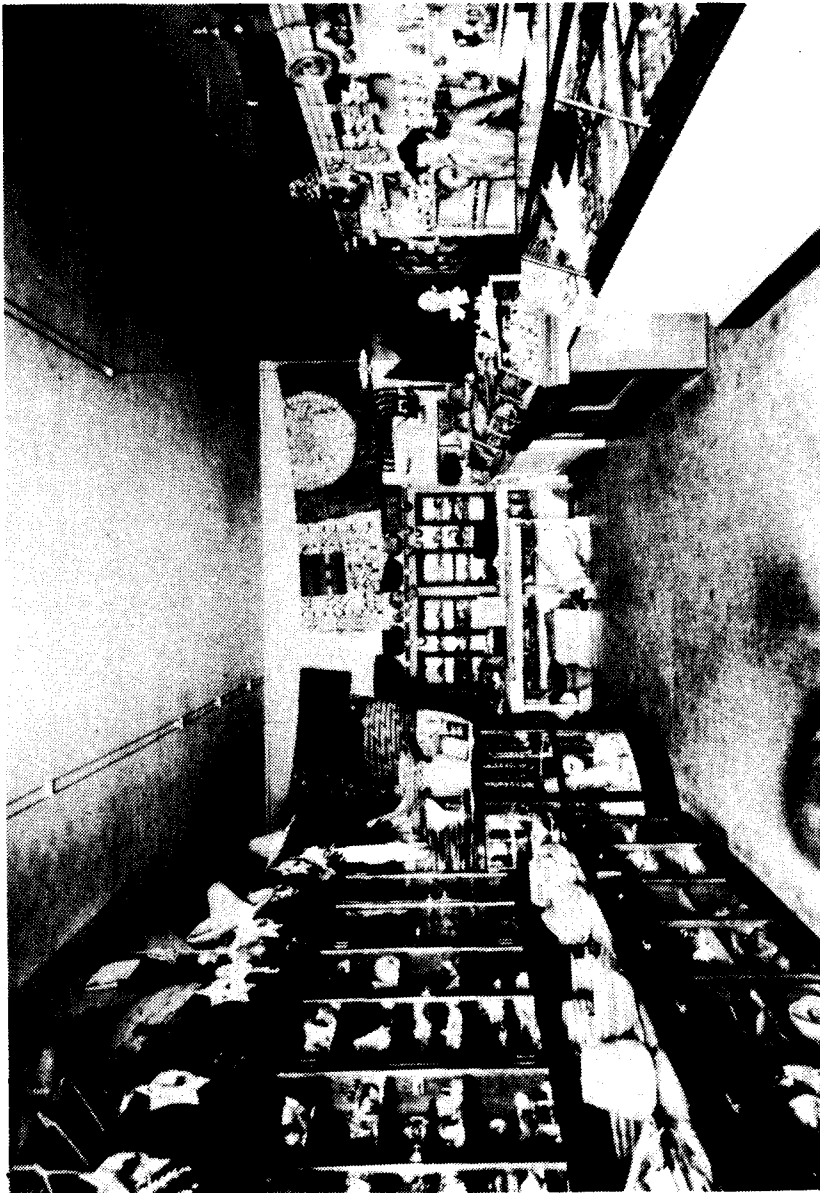
Care has been taken to go "all the way" in following the Spanish motif and the completed building brings an unusual beauty to the business district. When the many external finishing touches are applied, it will have an air of informality, of quaint charm, quite different from the rigid, stern plainness of many buildings or the flamboyant ornateness of others. Builders and designers of the new building are quite frank in considering it a challenge to the city and to those who intend to build in the business district.

Carving Over Door Portrays History of Bank's Founder

Few people in Pacific Grove are familiar with the long and colorful career of T. A. Work, now prominent in Monterey County finances and one who is playing a leading part in the development of Monterey Peninsula. It was a good many years ago when he was actively engaged in the hauling of baggage in order to earn his living. The story is told that he once drove the milk wagon.

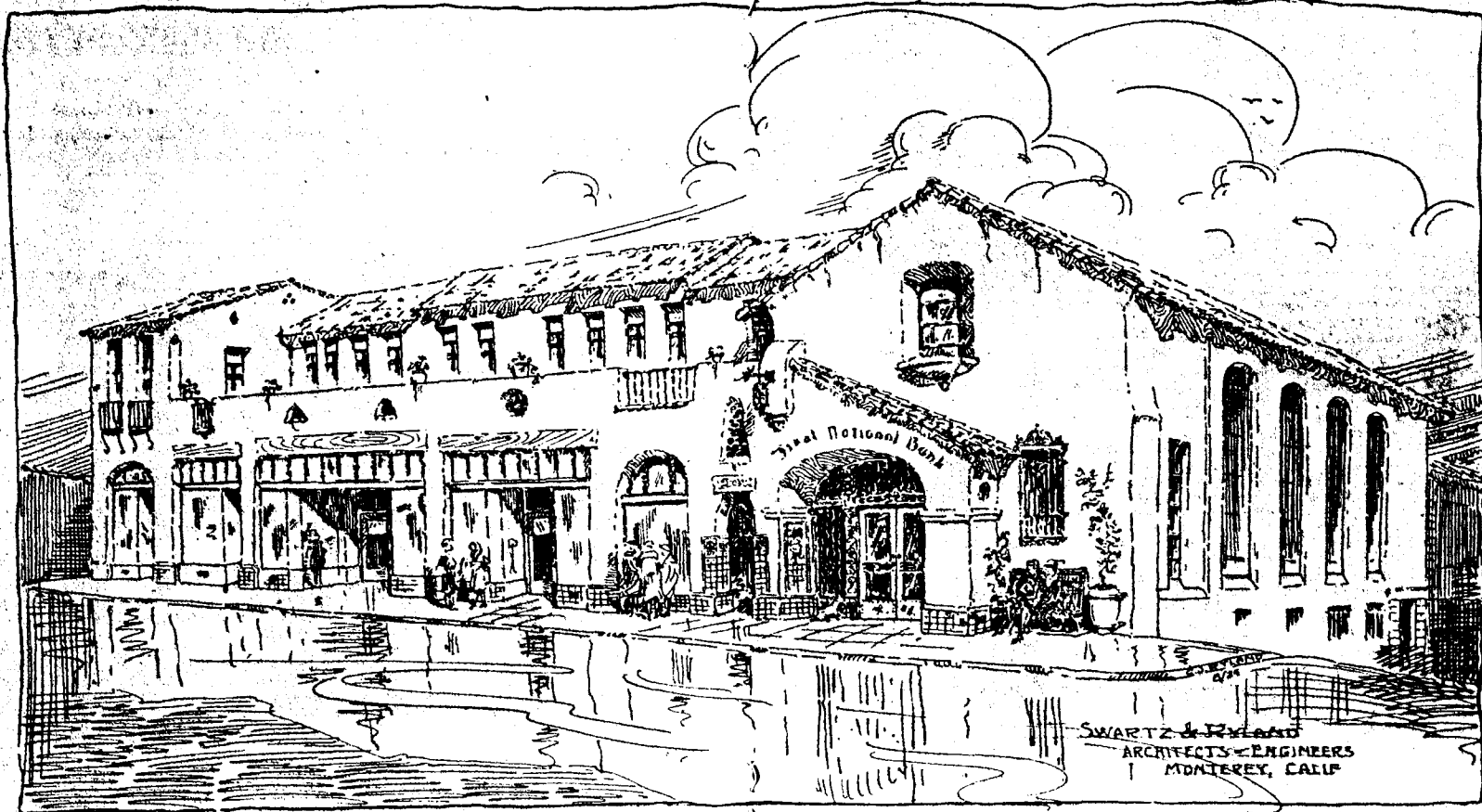
In was in 1892 when he ran an advertisement in the Pacific Grove Review for his "Cheap Cash Store" and was one of the contractors figuring upon the graveling of the local streets. One of the first lines of business he engaged in was the handling of building materials. Since that time, this is hardly a variety of business which has been established here in which he has not had an active part.

Hints of this varied career and of the humble beginnings from which T. A. Work's widespread business activities sprang are conveyed in an unique wood carving over the door of the new First National Bank of Pacific Grove, of which he is president. The work has been done in the Spanish tradition by Sayer of Carmel. In one scene, carved in a clever, but intentionally crude fashion to follow the old Spanish style, Work is shown struggling with baggage and an unruly horse. In another, he is shown handling building materials, including sacks of cement.



Interior of curio shop owned by George S. Gould, where the Scotch Bakery is now located. The ladies are Roxanna Gould (Smith) and Kate Gould (Bullier), daughters of Mr. Gould.

PACIFIC GROVE WELCOMES NATIONAL BANK



PACIFIC GROVE'S NEWEST FINANCIAL INSTITUTION, WHICH OPENS OFFICIALLY TODAY

The First National Bank of Pacific Grove opens its doors to public inspection this afternoon. An informal reception will be held this afternoon and evening, to be continued tomorrow afternoon and evening. The bank will open for business tomorrow morning at 10:00 o'clock and will keep the regulation banking hours from that time on. The remainder of the beautiful Spanish type building, pictured above, will be completed in the near future and will be occupied by several local firms. The upper story is devoted to modern offices.

Prominent Local Firms Will Occupy Stores in First National Bank Building

(From the Jan. 10, 1930 Tide)

Aside from the new bank, The First National Building will house a number of prominent Pacific Grove business firms and the offices of several professional men. These organizations and individuals are now preparing to soon enter their new quarters. All are anxious to make the change.

Meagher & Stewart ("Where Quality Counts"), prominent dry goods firm, has been the next busiest place in town this week, rivaling the bee-hive in the bank itself. This has been because of the removal sale that has been in progress. An attempt is being made to clear out all the present stock so that "nothing will be moved but the office books," as the advertisement reads.

One of the new stores will be fitted out for this firm. A description of the new quarters is impossible at the present time, due to the fact that the work is not yet far enough along. Suffice it to say that a beautiful and attractive store is in prospect to house a steadily growing business.

F. R. Meagher, manager of the store, has had many years' experience in the dry goods business in this city and in Los Angeles before starting the present firm. Chandler Stewart, his partner, is well known for his quality grocery store.

O. S. Ziegler, proprietor of Ziegler's Dairy and two creameries, one in Pacific Grove and one in Monterey, has ordered the latest equipment for one of the most complete "soda grills" on the Pacific Coast. His patronage in his small establishment on Fountain avenue has grown to such an extent that he is preparing to care for a greatly increased business.

All of the fittings will be in keeping with the architectural plan of the building, so that the establishment will be beautiful as well as efficient. Detailed description of the place will have to be delayed until such time as the fine new soda fountain and other equipment is installed and the decorative work is completed. From all reports, however, the spot is destined to become one of the most popular in the community.

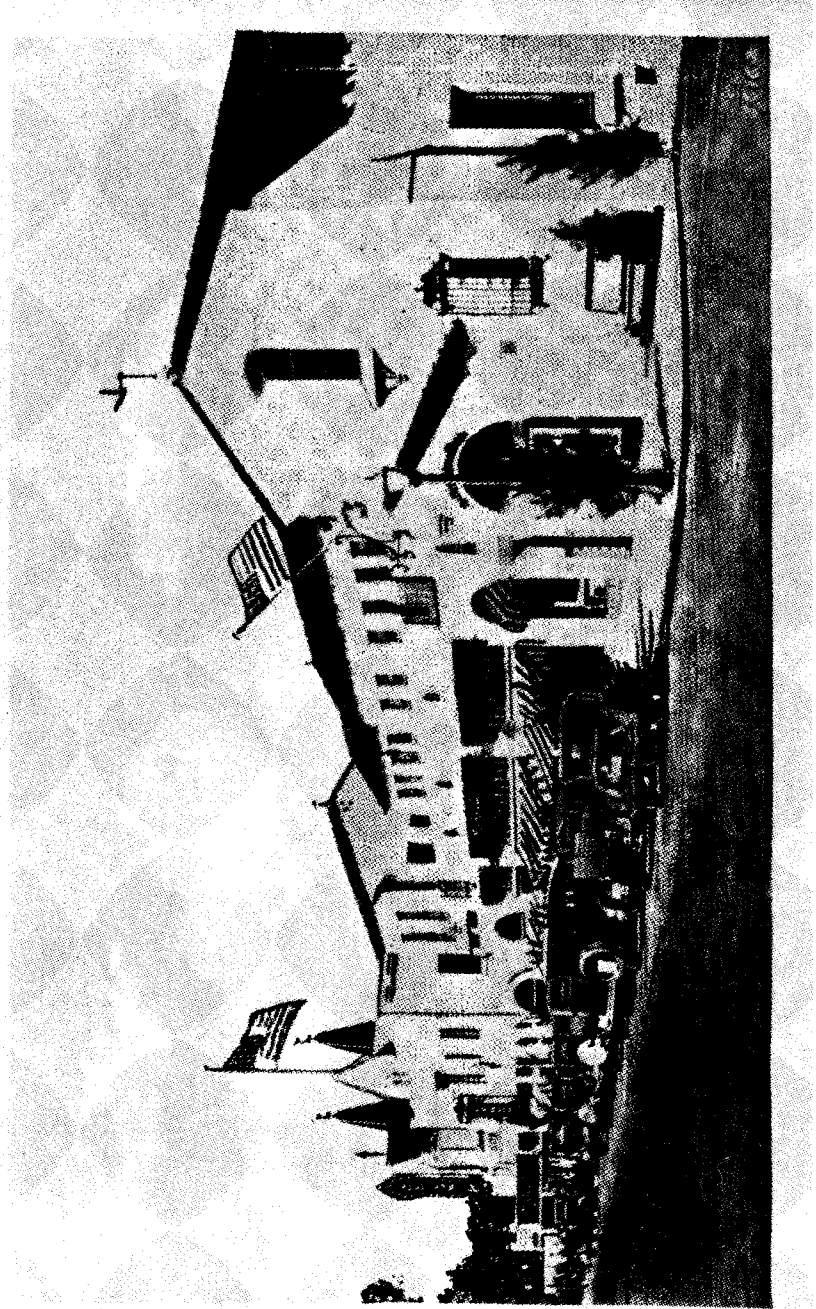
M. W. Crowley, who moved out of one of the old wooden structures which were razed to make way for the new building, is going to great length to equip his new office. He wants it to be the most outstanding real estate office on the peninsula and promises to have just that. Mahogany furniture is being ordered to fit the establishment out in beautiful style. There will be a long counter separating the office space from the lobby.

10

Others Saw Us Through Postcards

6680

Lighthouse Avenue, Pacific Grove, California.



Postcard sent by Aunt Lucy to her nephew in Mendota on October 8, 1941. From the Pat Hathaway Collection.

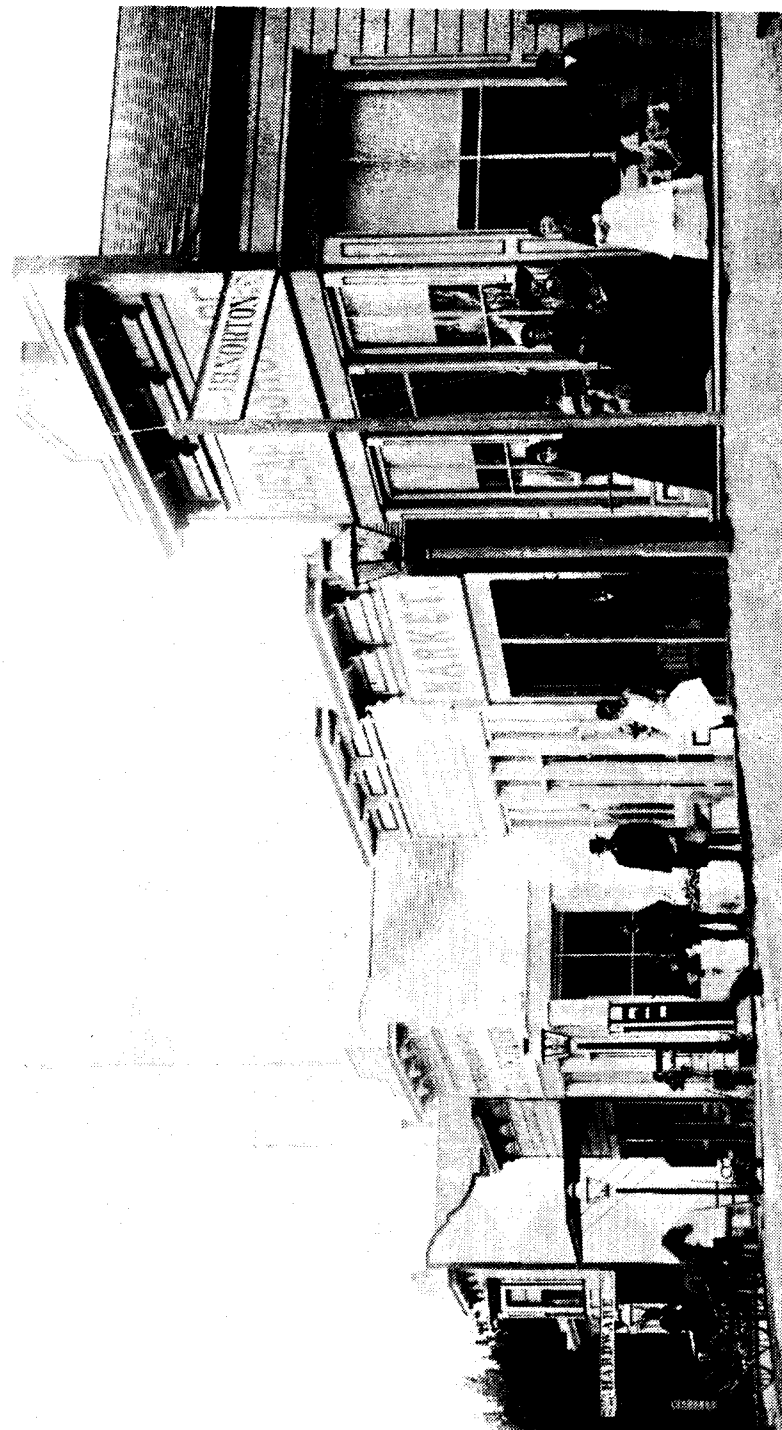
//

Down The Piney Path

News of old Pacific Grove from the Salinas Weekly Index (April - May 1887)

❖ by E. C. Davis

- ◆ Under the supervision of McDorgan, workmen are now engaged in putting in gas works on one of the stable lots opposite the new hotel at Pacific Grove. The apparatus is what is known as a Springfield Gas Machine No. 10, and generates gas from gasoline. It has a capacity of 3,000 feet, or at the rate of 200 burners for six months. It is an underground vault, and the pipes will be kept full by a pump operated by a water wheel.
- ◆ Mr. Maynard's residence is rapidly nearing completion. It is situated on Central Ave., back of Judge Spencer's.
- ◆ There was a rainbow social here last Friday evening at which the gentlemen were expected to thread their own needles and hem the ladies' aprons. Various degrees of dexterity were exhibited.
- ◆ The five four-in-hand teams from Del Monte stables are seen daily spinning through the Grove with tourists from abroad.
- ◆ The workmen on El Carmelo are decidedly musical. Some of them have fine voices and are to be heard every evening in conjunction with harmonica and accordion, producing excellent effect.
- ◆ There was an excursion of 300 people from San Jose last Saturday.
- ◆ 25 members of the zoological classes of the San Jose Normal School, accompanied by several professors, spent three days at the Grove during the past week.
- ◆ Prof. Frank Louie King, of San Jose, will give five historical piano recitals here in July.
- ◆ A musical convention will be held (in conjunction with Chautauqua) to which all musicians in the State are cordially invited.
- ◆ J. B. Norton has been offered \$4,000 for his lot and store by Miss Tennant of San Jose and refuses to take it. The property is located at the corner of Lighthouse and Forest. (Please see photo on next page.)
- ◆ Miss Tennant has purchased the lot where the butcher shop is, paying \$100 a front foot or \$1500 for the entire fifteen feet.
- ◆ The skating rink is now completed. He has had a large stage built, with scenery and drop curtains; also raised seats all around the building.



Business block between Forest and Grand, circa 1890. J. B. Norton's store is on the corner of Lighthouse and Forest. The only building in the photo still standing is the Hardware store at the corner of Grand and Lighthouse, now the home of Prim & Proper.

1994 Heritage Awards

On May 12th the Heritage Society announced the recipients of the 1994 Heritage Awards at its annual Historic Preservation Week Program. Board member Kathy Cadigan presided over the program held for the second year in a row at the historic Mayflower Church. With almost 100 members and friends in attendance, it was one of the largest crowds ever for this event.

Many nominations were received this year and the decisions were difficult. Bronze Heritage House Awards were presented to 109 15th Street, 151 Carmel Avenue and 315 Grand Avenue (commercial). The Heritage Design for new construction was presented to 210 Park Street. Letters of Commendation were presented to 405 19th Street, 894 Laurel, 701 Mermaid, 451 Asilomar and 701 Mermaid. After the Awards presentation, Kent Seavey, noted preservation professional, gave a talk on the Bungalow. He accompanied his talk with a slide show featuring many examples of bungalows in Pacific Grove. Refreshments followed.

The Home & Garden section of the Sunday Herald (May 15, 1994) featured a full page story on the awards with color photos of many of the buildings.



151 Carmel, built in 1897 by Mr. Beverton for his family, including his wife's Aunt Lizzie, who was technically the first owner of the house, Mrs. C. F. McNeil.

14

Bobbie Hall says: "Thank You Quilt Show Volunteers!!!"

This year's Quilt Show was a great success. The Preview Party sold out, the attendance at the show was better than ever, and most importantly, there was a wonderful response for sign-ups to help.

Many thanks to all of you who helped with the Show. Thanks to all the people who spent hours on the telephone, did mailings, helped with publicity, hung up and took down the Show, worked in the Tea Room, baked cookies, took turns as hostesses, made appetizers for the Preview Party, and stayed at Chautauqua Hall during the off-hours to provide security for the quilts. You were wonderful. Your efforts resulted in this success and are greatly appreciated.

New Members

Helen Gehringer	Malcolm & Jill Knisely
Gail Abeloe & Gary Sprader	Mr. & Mrs. J. A. Stewart
Judy Mueller & William Langdoc	David & Louise Simson
Angela & William "Tip" Tyler	G. W. & Andrea Robinson

Share The Heritage With A Friend Annual Family Membership \$10.00

Members receive *The Board and Batten* newsletter of the Heritage Society of Pacific Grove.

Name: _____

Address: _____

City: _____

State: _____

Zip: _____

Phone: _____

✂ Please return to The Pacific Grove Heritage Society
Box 1007 ♦ Pacific Grove, CA 93950 ♦ Telephone 372-2898

15

*The
Heritage Society
of Pacific Grove*

P.O. Box 1007
Pacific Grove, CA 93950

Nonprofit Org.
U.S. POSTAGE

PAID

Permit No. 30
Pacific Grove,
CA 93950

Board of Directors

President: Geoff Welch
Vice President: Pat Harr
Treasurer: Don Beals
Secretary: Carrol Patterson

Marilyn Arioto Katy & Tim Cadigan
Bob Gunn Bobbie Hall
Lucinda Jaconette Christie Martine
Elizabeth Moore Patrick Price
Muriel Pyburn John Renz
Irene Tope Pam Verduin
Adam Weiland

The Board and Batten Staff

Adam Weiland
Colin Gough
Richard K. Price
Typesetting courtesy of
Pro-Log Corporation

The Barn

Laurel & 17th
(408) 372-2898
Hours
Sat. 1-4 p.m.

**NATIONAL TRUST
MEMBER
ORGANIZATION**