



# THE BOARD AND BATTEN

Newsletter of the Pacific Grove Heritage Society

October/November 1989

## The Heritage Society of Pacific Grove

P.O. Box 1007  
Pacific Grove, CA 93950

### Board of Directors

President: Jeanne McCombs  
Vice President: David Korhonen  
Treasurer: Don Beals

Marilyn Arioto  
Lynne Harter  
Bob Doerr  
Bob Dease  
Shirley Palmer  
Kathie Taylor

Heene Tope  
Sitrah Harris  
Muriel Pyburn  
Carrol Patterson  
Adam Weiland  
Lee Purcell

### The Board and Batten Staff

Colin Gough  
Adam Weiland  
Tom Mangelsdorf  
Typesetting by Pro-Log Corporation

### The Barn

Laurel & 17th  
(408) 372-2898  
Hours  
Sat. 1-4 p.m.

NATIONAL TRUST  
MEMBER  
ORGANIZATION

## The Inside Stories

☞ **Tudor Style**  
Popular English architectural style of the 1920s and 30s

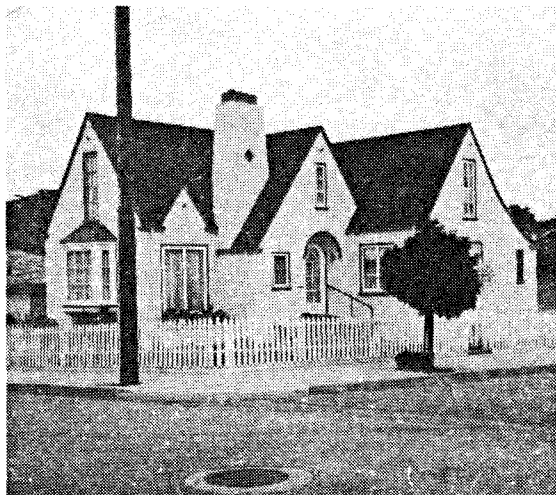
☞ **Down the Piney Path**  
News from the Pacific Grove Review

☞ **Monterey & Pacific Grove Street Railway**  
Intercity railway with "saloon stops" along the way

☞ **Christmas At The Inns**  
Buy your tickets early for this sellout event

☞ **Preservation & Education**  
News from the National Preservation Convention

☞ **Rules & Regulations**  
Two color reproductions available



A. W. Weiland

### 650 Spruce

The above house, 650 Spruce Street, is an example of the Tudor style of architecture. This is one of many styles, Victorian and otherwise, which are being featured in a series of articles on architecture in Pacific Grove. This is the last in the current series of articles dealing with the more common styles of architecture in Pacific Grove. Special thanks to Kent Seavey for writing this well-received series. Future issues will feature some rare or one-of-a-kind styles found in Pacific Grove.

**Christmas At The Inns • December 5, 1989**

(See Inside For Details)

Nonprofit Org.  
U.S. POSTAGE  
**PAID**  
Permit No. 30  
Pacific Grove,  
CA 93950

## Tudor (1920s - 1940s)

❖ by Kent Seavey

This style of building was used for a large proportion of early 20th Century suburban houses throughout the country. It was particularly fashionable in the 1920s and early 30s when only the Spanish Mediterranean modes rivaled it in popularity as a vernacular style on the Monterey Peninsula. The popular name for the style is historically incorrect, since few examples closely mimic the architectural characteristics of early 16th Century England. Instead, the style is loosely based on a variety of late medieval English prototypes, ranging from thatch-roofed folk cottages to grand manor houses.

This style appeared in popular builders' pattern books into the late 1930s. The style is identified by steeply pitched roofs, usually side gabled with the facade dominated by one or more prominent cross gables. Decorative non-structural half-timberings are present on about half the examples. Tall, narrow windows, usually in multiple groups and with multi-pane glazing, are common as are massive chimneys commonly crowned by decorative chimney pots. Good examples can be seen at 650 Spruce (front cover), 226 Laurel, 410 Pine and 312 Willow Street (see below).



312 Willow Street

A. W. Weiland

## Down The Piney Path

News from the Pacific Grove Review: November — December 1903.

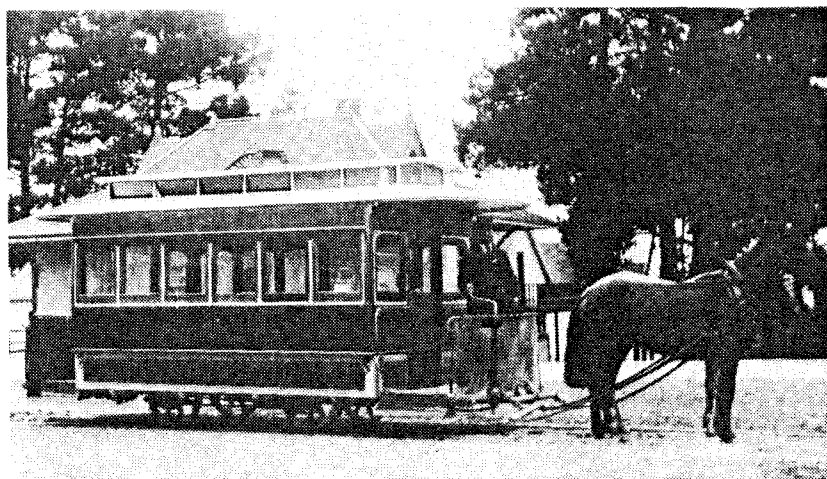
❖ by E.C. Davis

- The football team of the high school gave a banquet to the high school girls in the M.E. Church parlors last evening.
- A party of surveyors has been drawing the plans for an extension of the Monterey and Grove street railway to Carmel Mission in the vicinity of the 17 Mile Drive.
- A deserter from the 15th Infantry stole a horse on Monday, and after an exciting chase in which the fugitive exchanged shots with his pursuers, was captured in San Benito County.
- Miss Edith Anderson's 15th birthday party included an exciting game of progressive peanuts.
- Will the parties having in their possession borrowed copies of "Around the World with General Grant", "Kidd's Elocution" and a steel abalone hook return same to owner and save further mention in these columns.
- William Daingerfield was among the passengers on the Steamer "Discovery" wrecked in the gulf of Alaska October 29th.
- Mr. M. Curran, foreman of the Grove Bakery, was the winner of the first prize for bread at the Midwinter Fair of 1894.
- Silver nutcrackers with \$1.00 worth of nuts at A. M. Aggeler's.
- Hurrah for Santa Claus. Everything in his line at the Golden Rule Bazaar.
- A school of sardines came into the bay on Sunday, and the fish ventured so near to the shore the boys caught them with their hands.
- Edward Berwick has planted a number of aron caria excelsa and California fan palms in Greenwood park.
- It is expected that the 9th Cavalry will be housed in their new quarters on the Military Reservation before the close of this week, and that the camp near Chinatown will be entirely deserted by that time.
- Great big piece of ginger bread five cents, Grove Bakery.

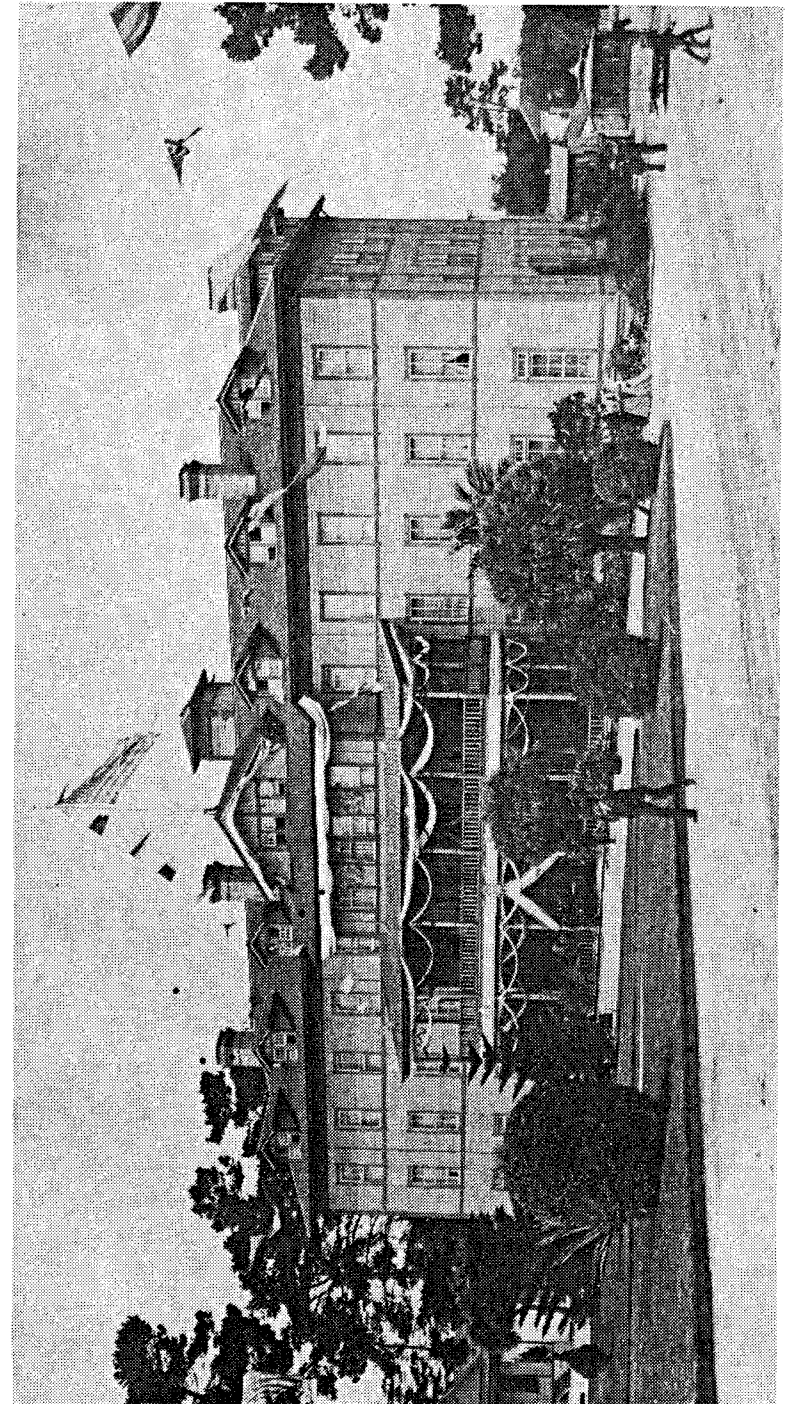
## Monterey & Pacific Grove Street Railway

The Monterey & Pacific Grove Street Railway was a single track line that ran from the west gate of the Del Monte Hotel on Sloat in Monterey to the S.P. Railroad depot in Pacific Grove from 1891 until 1923, when it was abandoned for lack of ridership. The apple green and yellow cars were each pulled by two horses until 1904, when the system was electrified. The cars left the Del Monte Hotel and went through Oak Grove and Monterey into New Monterey on Lighthouse. They continued on Central into Pacific Grove, occasionally stopping at the horse car barn located at Central and 2nd Street (until 1903). At the corner of Fountain, the cars turned left, stopping at the Pacific Grove Hotel, and went up to Lighthouse where they turned right and continued on to 19th. There they turned right and proceeded down to the depot where the Monarch Pines mobile home park now sits. The fare was 20 cents until 1904 when it was reduced to 10 cents. Plans were made to extend the line along Lighthouse to and then along the 17 Mile Drive to Carmel. It never happened.

My favorite story about the railway concerns the old Half Way House Saloon (of course) in New Monterey, now gone (the saloon, not New Monterey!). It seems that on especially warm days, the men returning home to Pacific Grove from work in Monterey would rock the car back and forth until it jumped the tracks... right in front of the Saloon. They would then dash in for a beer while they waited for the car to be put back on the tracks.



Railway car in front of Pacific Improvement Company office at corner of Grand and Lighthouse. Circa 1899.

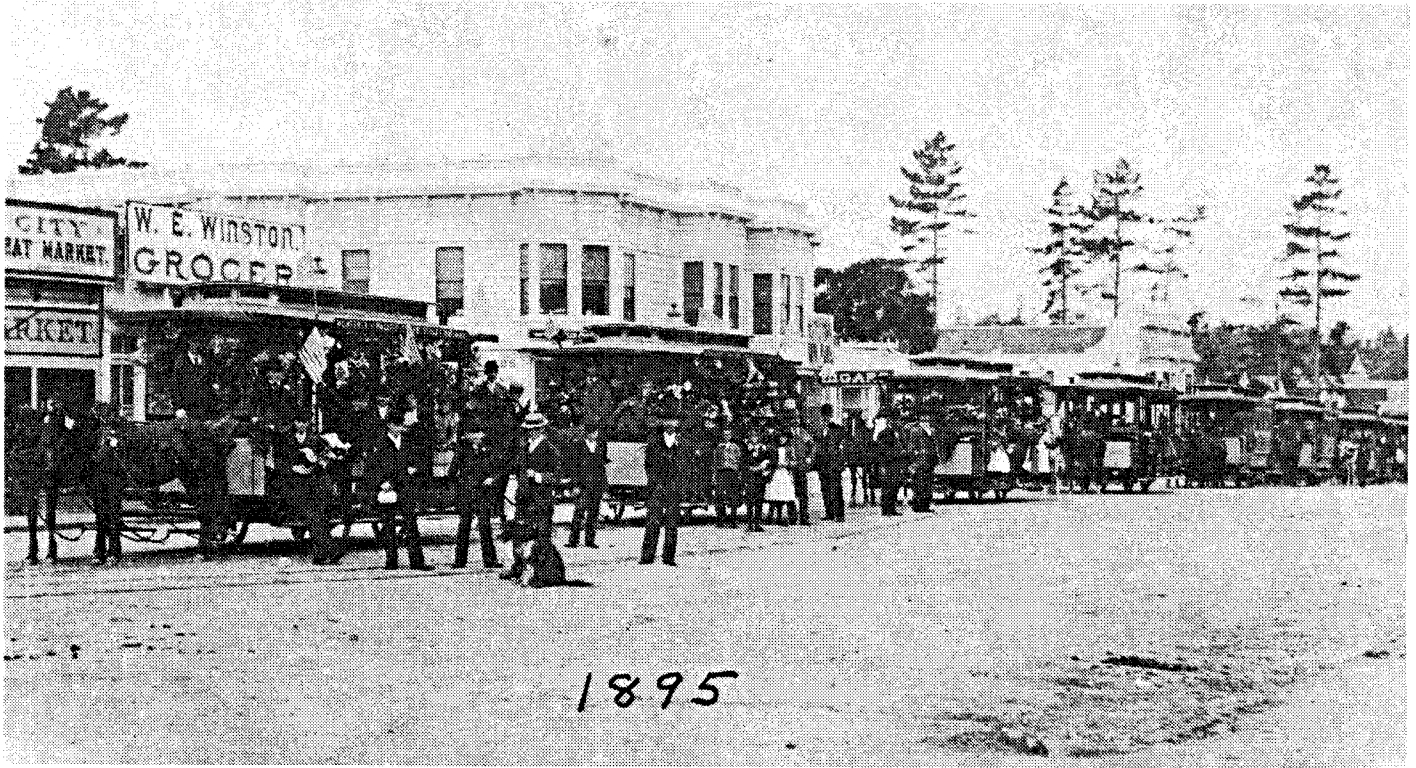


Notice railway car going down Fountain beside Pacific Grove Hotel circa 1900.

## Can You Find Our Barn?

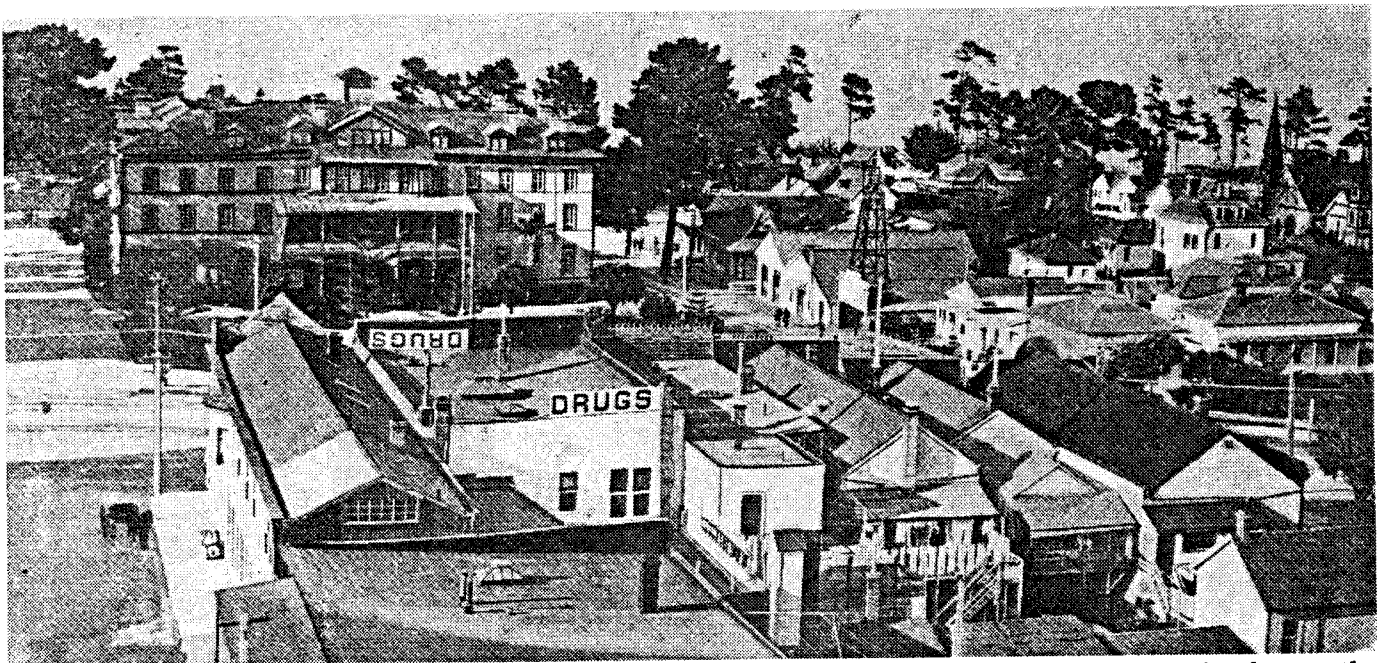


*Parade down Forest in 1920s. Notice doors to firehouse in City Hall Building.*



Cars lined up on Lighthouse & 17th for opening of railway extension

## Others Saw Us Through Postcards



Sept. 17, 1909: Dear Stella, we are here but arrived after dark. Think you and Manual could have a nice time here on the beach. Good bye. Mrs. Taylor

## Christmas At The Inns

The 5th Annual Christmas At The Inns tour will be held on Tuesday evening, December 5, 1989 from 6:30 to 9:30. The five Inns participating on this year's tour are: Green Gables, Martine Inn, Gosby House, Centrella Hotel and Maison Bleue. Tickets are still only \$10.00 each and may be purchased at the Chamber of Commerce office at Forest and Central. The first four tours were early sellouts, so avoid disappointment and get your tickets now.

The tour is co-sponsored by the Heritage Society and the Pacific Grove Art Center. Proceeds are divided equally between the two organizations. They both thank you for your attendance.

## Preservation And Education

Board member Irene Tope, our Preservation Director, recently attended the National Preservation Convention in Philadelphia. The following comments are excerpted from her report given at the last Board meeting.

She stressed that one cannot speak of just preservation. One must include the environment and heritage education. All who have looked at the status of preservation activities agree that we must adopt guidelines for education. This will shape the future success of preservation in this country. One should look not only at architecture but at a broad life-long experience of your environment. This education should be from pre-school to 12th grade.

The National Trust is proposing a national clearing house for standards of education. The phrase "celebrate community" is used for the all-encompassing effect that they are trying to achieve. The Trust wants to integrate preservation into classroom education. They want to change the way in which teachers present the material. The national trust wants to become a resource for these teachers and they propose a national report on changes in social studies. When a teacher presents her material on preservation, she should bring those ideas into the art classes, geometry classes and other classes as well. One speaker proposed Emerson's essay on history emphasizing that the student become a participant in history. The feeling of participation is all important. Local history is the focus for life in a shrinking world. Here in Pacific Grove our Victorian Heritage should serve to give a sense of orientation to all students.

## Rules & Regulations

Your Heritage Society has arranged for the Rules & Regulations of the Retreat Association to be reproduced on heavy card stock paper in two colors, suitable for framing. Each membership is entitled to one free copy. Current members may stop by the Barn on Saturday afternoons and pick up their free copy. Unfortunately, we cannot mail them. Additional copies are available for \$1.00.

## Picnic

The theme for the new display at the Barn is "Picnic". It was designed and put together by Mary Twisselman and Lynne Harter. Stop by the Barn on Saturday afternoons to see it.

## Gift Membership

Gift memberships for the Heritage Society are available for only \$10.00. If you believe in the Society and enjoy the newsletters, share it with a friend or two. Use the form in this issue or drop us a note. We will acknowledge your gift to you and also send a card to the recipient. If the recipient is already a member, we will extend their membership for a year and send them a card. Thank you.

### Share The Heritage With A Friend

Annual Family Membership \$10.00

Members receive the *Board & Batten* newsletter of the Heritage Society of Pacific Grove.

Name: \_\_\_\_\_

Address: \_\_\_\_\_

City: \_\_\_\_\_

State: \_\_\_\_\_

Zip: \_\_\_\_\_

✉ Please return to The Pacific Grove Heritage Society  
Box 1007 ♦ Pacific Grove, CA 93950 ♦ Telephone 372-2898